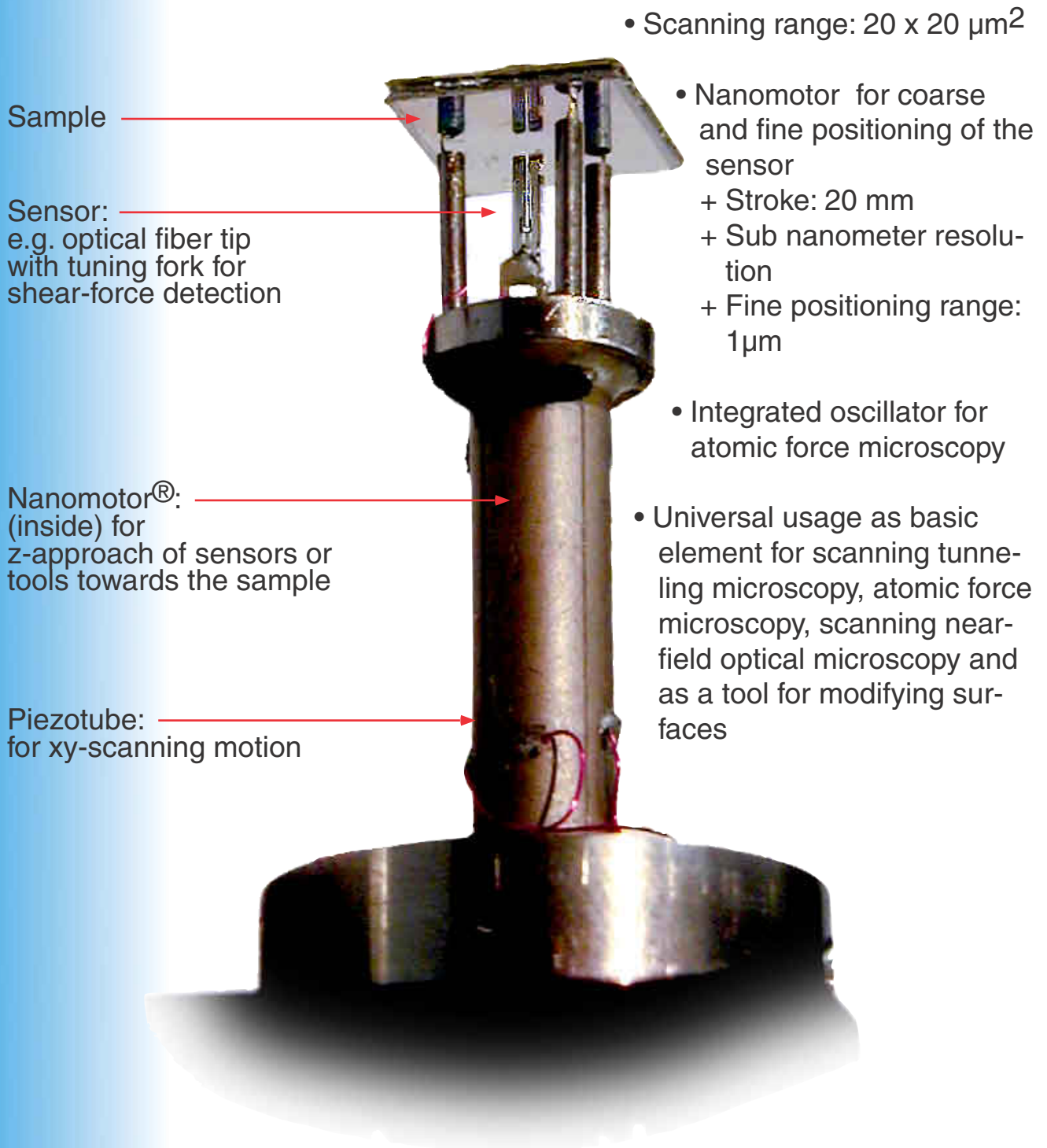
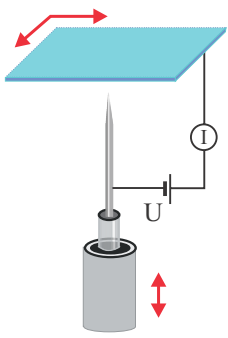


SCANNING PROBE HEADS

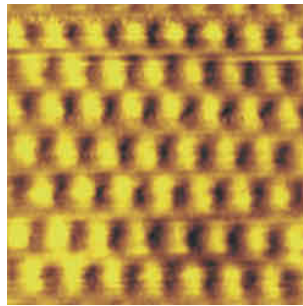
EXTENDING AN ANALYTICAL DEVICE TO A TOOL



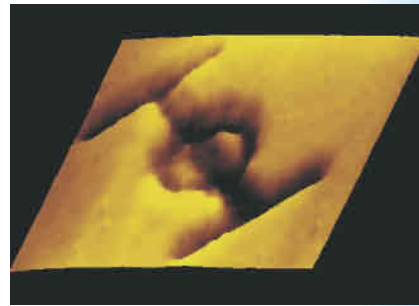
SCANNING PROBE HEADS



Scanning Tunneling Microscope (STM)

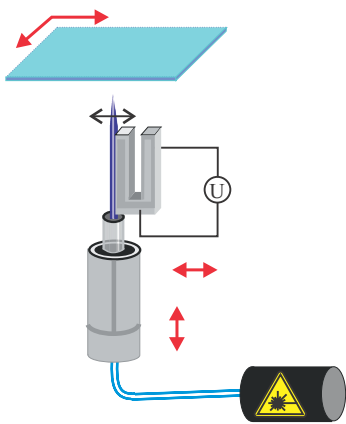


Atomic resolution:
Graphite surface

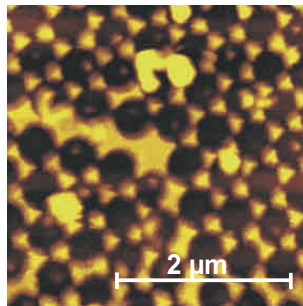


Material processing:
„Erosive Scanning“

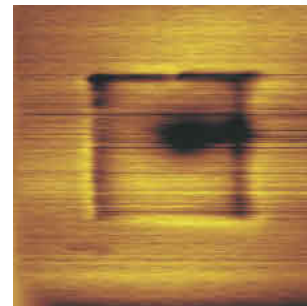
Method:
The Φ (which has a length of 200 nm) was produced during scanning by evaporation of the surface.



Atom Force Microscopy (AFM)

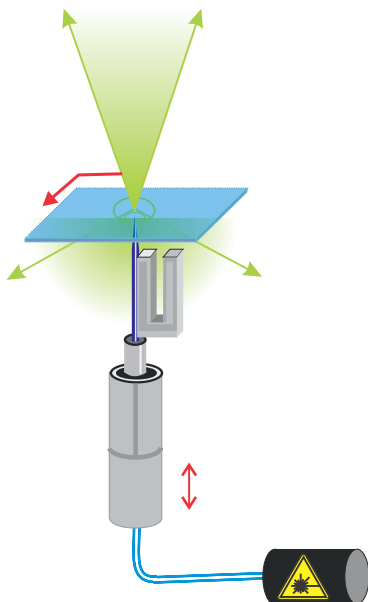


Topographic image:
Aluminium-triangles on glass

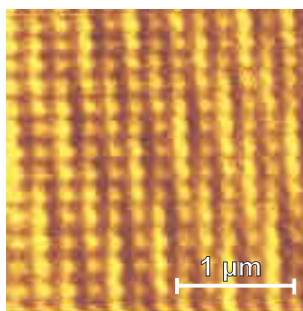


Surface modification:
Varnish on glass

Method:
While scanning the surface a high-intensity laser beam is coupled into the optical fiber



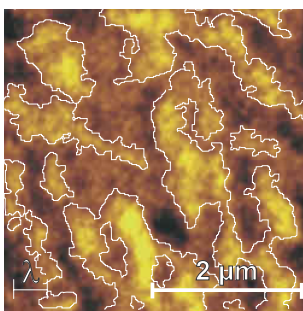
Magneto-Optical Scanning Near-Field Microscopy (MO-SNOM)



a) 200 nm nickel-dots

a) Optical image:

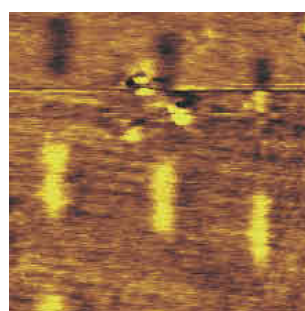
Detecting the intensity of the reflected near-field radiation



b) data-bits (reflection)

b,c) Magneto-optical image:

Detecting a polarisation rotation of the reflected or transmitted near-field radiation



c) magnetic domains smaller than the wavelength of light

Precision made in Aachen:

Klocke Nanotechnik

GERMANY:
Pascalstr. 17
52076 Aachen

Phone: +49-2408-95099-20
Fax: +49-2408-95099-26

www.nanomotor.de
info@nanomotor.de